

The Oyster Perpetual
EXPLORER



Oyster, 39 mm, steel
EXPLORER

The Explorer is inspired by Rolex's decades of experience in the Himalayas, and pays tribute to the first successful ascent of Mount Everest in 1953 by an expedition equipped with Rolex Oyster Perpetual chronometers. It was first launched that very year as the ultimate expedition and mountaineering watch.



Reference

214270

MODEL CASE

MODEL CASE

Oyster, 39 mm, steel

OYSTER ARCHITECTURE

Monobloc middle case, screw-down case back and winding crown

DIAMETER

39 mm

MATERIAL

904L steel

BEZEL

Smooth

WINDING CROWN

Screw-down, Twinlock double waterproofness system

CRYSTAL

Scratch-resistant sapphire

WATER-RESISTANCE

Waterproof to 100 metres / 330 feet

MOVEMENT

MOVEMENT

Perpetual, mechanical, self-winding

CALIBRE

3132, Manufacture Rolex

FUNCTIONS

Centre hour, minute and seconds hands.

Stop-seconds for precise time setting

OSCILLATOR

Paramagnetic blue Parachrom hairspring.

High-performance Paraflex shock absorbers

WINDING

Bidirectional self-winding via Perpetual rotor

POWER RESERVE

Approximately 48 hours

PRECISION

-2/+2 sec/day, after casing

BRACELET

BRACELET

Oyster, flat three-piece links

BRACELET MATERIAL

904L steel

CLASP

Folding Oysterlock safety clasp with Easylink

5 mm comfort extension link

DIAL

DIAL

Black

DETAILS

Highly legible Chromalight display with long-lasting blue luminescence

CERTIFICATION

CERTIFICATION

Superlative Chronometer (COSC + Rolex certification after casing)



History of the Explorer

THE OYSTER PERPETUAL CHRONOMETER

When climbers reach altitudes usually attained by cruising commercial jets and brave temperatures as low as -50°C (-58°F), confronting icy precipices and deadly winds, with 70 per cent less oxygen than at sea level, they need the right gear. This is why several of the pioneering expeditions that scaled the Himalayan peaks from the 1930s onwards relied on the Rolex Oyster as their indispensable timepiece.

When Sir Edmund Hillary and Sherpa Tenzing Norgay finally made it to the top of the world on 29 May 1953, their expedition, led by Sir John Hunt, was equipped with Rolex Oyster Perpetual chronometers.

History of the Explorer

THE EXPLORER

The epic feat was so emblematic of the qualities of precision and reliability associated with the Oyster watch that the brand marked the occasion in 1953 with the launch of a dedicated model: the Rolex Explorer. It benefited from all the technical know-how gained during the Himalayan expeditions over the decades to make it one of the most rugged of all Oysters: it featured a robust, all-steel bracelet and a new Twinlock winding crown with a double waterproofness system.

The Explorer was among the first in a series of watches designed specifically by Rolex for professional users. The Explorer has had iconic status ever since.





Spirit of the Explorer

THE NEW EXPLORER

The Rolex Explorer received special attention in 2010, when the latest version of this classic made its much anticipated appearance. While the characteristic sober and elegant lines of the Explorer have been preserved, most of the enhancements are to be found inside the watch. The most visible change is an enlarged, 39 mm case, compared to the previous 36 mm diameter, giving the new model a bolder look.

Style of the Explorer

SMOOTH BEZEL

The new Oyster Perpetual Explorer imparts a fresh elan to the sober, clean lines that have long established it as an icon. The smooth bezel in 904L steel is robust yet elegant, and in perfect harmony with the Explorer's iconic heritage.





Style of the Explorer

CRAFTED AROUND EXPERIENCE

The Rolex Explorer benefited from experience gained in the Himalayas, acquiring its clearly distinctive hour and minute hands, and its landmark, highly legible, black dial with luminous indices and large Arabic numerals at 3, 6 and 9 o'clock. It is designed for optimal legibility even in the dark – a crucial feature for explorers.

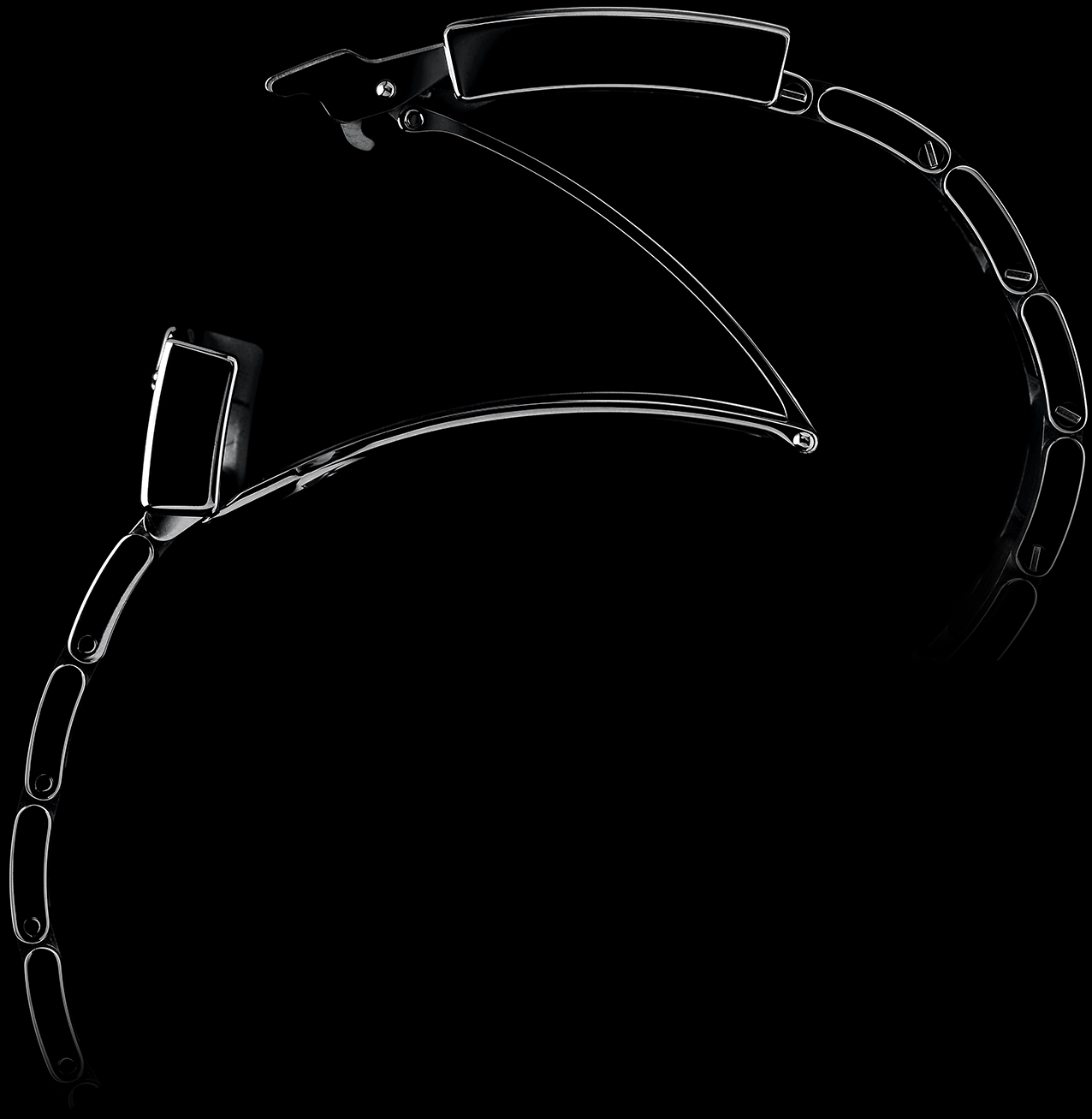
The new Chromalight display, with an innovative luminescent material that emits a blue glow, is legible in the dark for twice as long as before. The crystal is made of scratch-proof sapphire.

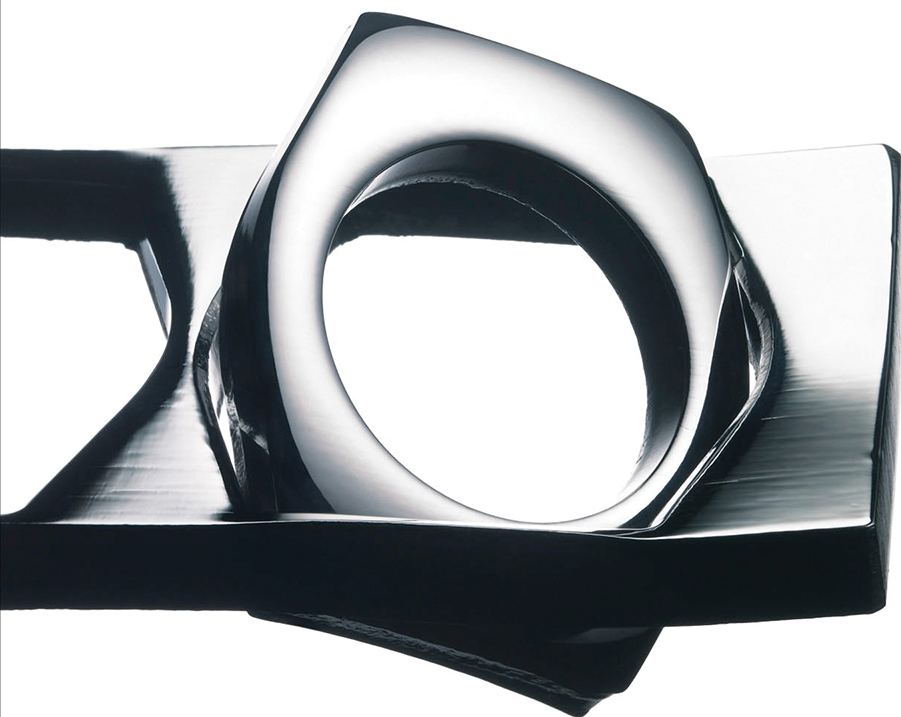


Features

TWINLOCK WINDING CROWN

The Twinlock system guarantees that the screw-down winding crown is perfectly water-resistant, thanks to two sealed zones, one inside the tube, the other inside the crown. This principle is used on all the watches in the Oyster collection that are guaranteed waterproof to 100 meters (330 feet).





Features

904L STAINLESS STEEL

Rolex uses 904L stainless steel for its steel watch cases. 904L is mainly used in the high technology, aerospace and chemical industries, where maximum resistance to corrosion is essential. A superalloy, 904L is extremely resistant and highly polishable. It maintains its beauty even in the harshest environments. 904L steel also provides a perfect complement to the precious metals used by Rolex.

Features

PARAFLEX



To increase the resistance of its movements to shocks – especially if the watch is dropped – Rolex developed Paraflex, a highly efficient shock absorber designed to protect sensitive components of the movement, notably the staff of the balance wheel. Paraflex shock absorbers increase shock resistance by up to 50 per cent.





Features

3132 MOVEMENT

The Explorer is equipped with calibre 3132, a self-winding mechanical movement entirely developed and manufactured by Rolex. It features a Parachrom hairspring and Paraflex shock absorbers, offering greater resistance to shocks and to extreme conditions.

Like all Rolex Perpetual movements, the 3132 is a certified Swiss chronometer, a designation reserved for high-precision watches that have successfully passed the Swiss Official Chronometer Testing Institute (COSC) tests. Its architecture, in common with all Oyster watch movements, makes it singularly reliable.



Spirit of the Explorer

THE WORLD AS A LABORATORY

The Explorer symbolises the privileged relationship that has always bound Rolex and exploration. Since the late 1920s, Rolex has been using the world as a laboratory to prove its watches under real-life conditions. This pioneering spirit prompted the company to equip numerous Himalayan expeditions, whose observations in the harshest environments have had a direct impact on the development of Oyster watches and the quest for greater precision, robustness and reliability.



Spirit of the Explorer

BECAUSE IT'S THERE

Mountaineer George Mallory was asked:
"Why do you climb Mount Everest?"
He replied simply: "BECAUSE IT'S THERE"

Expedition Watches

CONQUERING EVEREST



On 29 May 1953, two men fired with extraordinary determination were the first to reach Mount Everest's 8,848-metre summit. Sir Edmund Hillary and Tenzing Norgay, members of a British expedition led by Sir John Hunt, achieved the goal that dozens of other earlier expeditions had tried to reach: to stand on the top of the world.





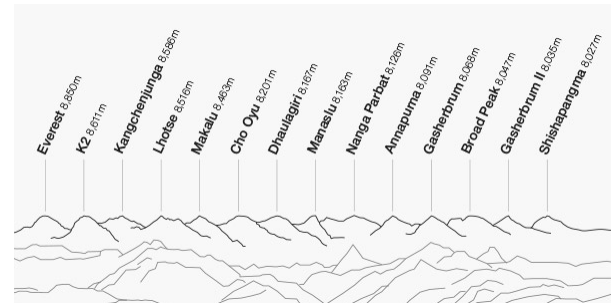
Ed Viesturs

REACHING THE SUMMIT IS OPTIONAL.
GETTING DOWN IS MANDATORY.



Ed Viesturs

14 X 8000



Ed Viesturs is the USA's leading high altitude mountaineer, and has climbed many of the world's most challenging summits, including ascending Mount Everest seven times. In 2005, he completed an 18-year project christened Endeavor 8000 to reach the summits of the 14 highest mountains in the world – all those whose summits exceed 8,000 metres or 26,240 feet.

And Viesturs climbed all 14 without using supplemental oxygen. For Ed Viesturs, the key to keeping going is to break up the climb into tiny stages.

Jean Troillet

ALPINE STYLE

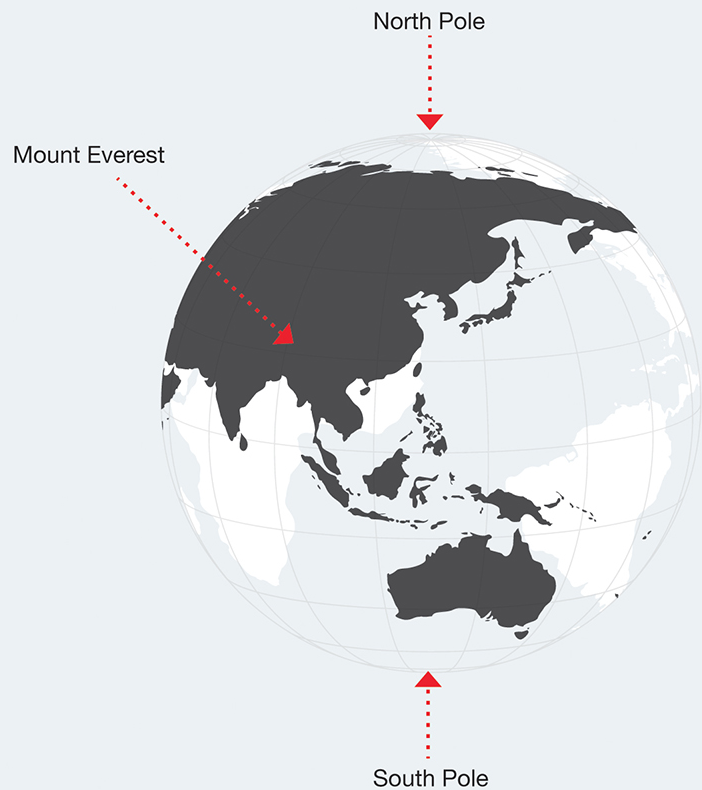
Swiss-Canadian climber and sailor Jean Troillet obtained his qualifications as a mountain guide in 1969. He has climbed 10 8,000-metre peaks, all in alpine style and without oxygen. He embodies that common characteristic of all explorers: perseverance. Troillet can no longer keep track of the expeditions in which he had to turn back in the face of danger and abandon a challenge. "At least 10 times," he says, "maybe a dozen." But he has always gone back: the mountain will still be there.



An aerial photograph of a vast, frozen body of water, likely a lake or sea. The ice is a deep, textured blue-grey color, with numerous cracks and crevasses visible. A prominent, dark, jagged crack runs diagonally from the upper right towards the lower left, bisecting the frame. The lighting is soft and even, highlighting the intricate patterns of the ice.

*“ Psychological preparation
is extremely important. ”*

JEAN TROILLET



Erling Kagge

THE THREE POLES

Before the age of 32, Norwegian adventurer Erling Kagge had sailed across the Atlantic alone twice, sailed to Antarctica and back, become one of the first two men to travel to the North Pole (with Børge Ousland) without outside assistance, reached the South Pole alone and unsupported (also a first), and climbed Mount Everest.

He became the first person in history to reach the “Three Extremes” – the two poles and the highest mountaintop.

Rune Gjeldnes

THE LONGEST MARCH

Norwegian adventurer Rune Gjeldnes became in 2006 the first and only person in the world to succeed in crossing the three big ice sheets – Greenland, the Arctic Ocean and Antarctica – unsupported. In November 2005, Gjeldnes started on “The Longest March”, a three-month, 4,800 km solo ski trek across the South Pole which he completed in February 2006. He now holds the records of the longest ski journey without resupply and the longest ski journey generally.



Features

SUPERLATIVE CHRONOMETER

The green seal accompanying every Rolex watch is a symbol of its status as a Superlative Chronometer. This exclusive designation attests that it has successfully undergone a series of specific final controls by Rolex in its own laboratories according to its own criteria, in addition to the official COSC certification of its movement. This unique testing of the chronometric precision of the cased-up movement, as well as of the watch's waterproofness, self-winding and power reserve, pushes back the boundaries of performance and makes Rolex the benchmark for excellence in mechanical watches. The green seal is coupled with a five-year guarantee which applies to all Rolex models.





Where to buy a Rolex

THE OFFICIAL ROLEX RETAILER

Only official Rolex retailers, distinguishable by this official green plaque, are allowed to sell and maintain a Rolex. With the necessary skills, technical know-how and special equipment, they guarantee the authenticity of each and every part of your Rolex, not to mention its reliability over time, helping you make the choice that will last a lifetime.



Find your retailer on [rolex.com](https://www.rolex.com)



EXPLORE AND DISCOVER MORE ON [ROLEX.COM](https://www.rolex.com)

All intellectual property rights such as trademarks, service marks, trade names, designs and copyrights are reserved. Nothing contained in this website may be reproduced without written permission. Rolex reserves the right at all times to modify the models featured in the present website.